

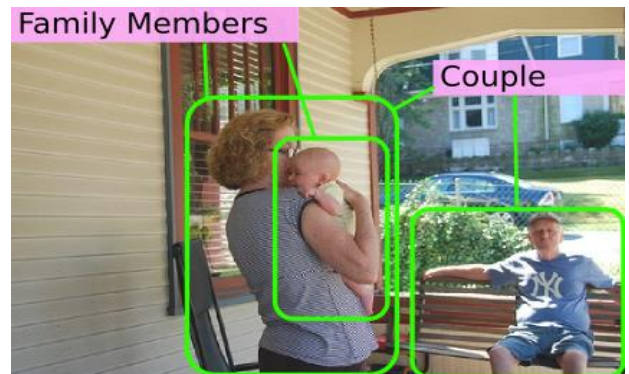
Intelligent Social Scene Analytics

Huge amount of multimedia data (images, videos, text, etc.) are created everyday through social media platforms and surveillance cameras, as well as social robots in the near future. These data captures significantly rich information about humans' everyday life. In order to build a smart city, it is crucial to enable machines with social intelligence. Intelligent social computing aims to develop computational systems that can understand, interpret and analyze humans' social behaviors, action, interactions, social role, and social relationships.



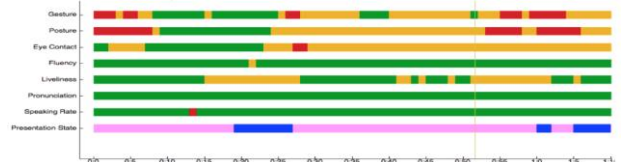
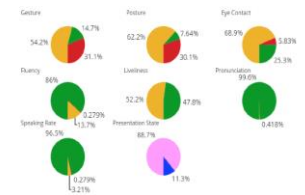
Features

- Automated social behavior analysis module that can be embedded in surveillance cameras.
- State-of-the-art social relationship recognition and social interaction prediction.
- Theoretically grounded computational models designed based on social science theories.
- Visual sentiment analysis on multimedia data.



Applications

- Intelligent surveillance systems that can detect social groups and recognize social relationships.
- Personalized intelligent privacy advisor that alerts users on sensitive social media content.
- Social enhanced robots that can understand and predict people's social behaviors.
- Visual content and sentiment driven advertising.
- Personal presentation coach.



Benefits

- Automate labor-intensive monitoring/analysis tasks with advanced analytics system.
- Intelligent social computing enables socially meaningful services or analysis that is not possible with conventional system.
- Enable new range of social enhanced applications or services for Smart Nation.

